



ALUMINUM STUCCO SHEET

.063 Mill Finish 3105 Alloy

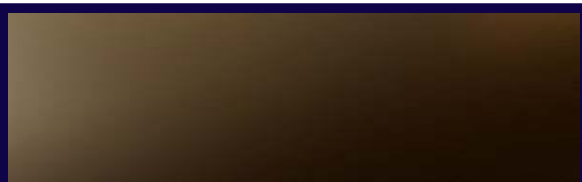
51 PCS 36" x 144" at \$92 per sheet

Aluminum Stucco sheets have high strength per weight because of their embossed finish. This finish is very durable and easy to clean. It also helps to diffuse glare to reduce reflectivity.

◆ 3105 Alloy retains its strength even at sub-zero temperatures, making these sheets perfect for refrigeration applications.

◆ The high strength per weight makes this a preferred material for doors, particularly garage doors.

In addition to the typical product applications, Stucco sheets are used in architectural applications. The embossed finish provides a unique modern industrial appearance.



DARK BRONZE ANODIZED SHEETS

.032 5005-H34

31 PCS 48" x 108" at \$79 per sheet

Yes 108", these are 11' sheets.

Compare to our 48" x 120" sheets at \$92.

This is a great deal if you can make it work.

We'll even sheer it to 96" for free if you want.



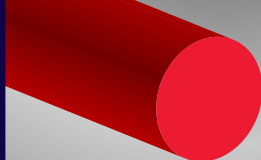
UNMASKED

CLEAR ANODIZED SHEETS

.050 5005-H34

45 PCS 48" x 120" at \$88 per sheet

Same as our stock sheet (@ \$105/pc) except these are not masked. They are in excellent shape now, but have a high potential of becoming damaged. We can mask each sheet (+\$10/pc).



STRUCTURAL

6061 T6



HEAVY DUTY Aluminum Rod

1 1/4" Diameter Round Rod x 10'

137 PCS at \$34 per piece

These 15 lb. rods are extruded from 6061-T6 structural aluminum alloy. These have a very high strength per weight.

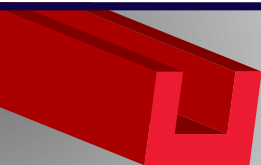
HEAVY DUTY Aluminum Tubes

1-1/2" O.D. X 1/16" Wall X 12'

64 PCS at \$50 per piece

1-3/8" O.D. x .058" Wall x 12'

27 PCS at \$54 per piece

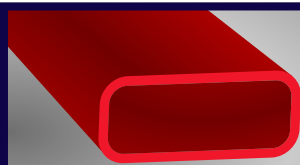


ALUMINUM CHANNELS

4 x 1 x 1/8 6063-T5

81 PCS 16' Lengths for \$30

These .125" walled channels have an overall width of 4" with 1" legs. Mill Finished and ready for fabrication.

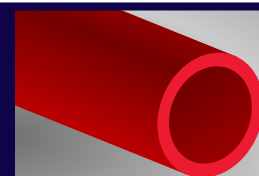


RADIUS CORNER TUBE

1 x 3 x 1/8 6063-T5

27 PCS 24' Lengths for \$54

Unique Clear Anodized profile tubes. The anodizing clamps left the ends a bit torn up. Cut that off and you'll still have 23'



6063-T5 MILL FINISH ROUND TUBES

1-1/4" O.D. x 1/16" Wall x 20'

244 PCS @ \$14

1-1/2" O.D. x 1/16" Wall x 12'

283 PCS @ \$9

1-3/8" O.D. x .058" Wall x 20'

80 PCS for \$17

CLEAR ANODIZED

2-1/2" O.D. x 1/16" Wall x 8'

178 PCS @ \$14

Reduced Prices. Prime Materials.

Priced per piece



ARCHITECTURAL 6063-T5



PART#	DESCRIPTION	\$ per PC	QTY
6063 ALUMINUM SOLIDS			
AS1012	3/16 X 3/4 RECT BAR MF X 16'	\$6.50	49
AS1023DBA	1/4 X 1 1/4 RECT BAR DBA X 16'	\$42.91	3
AS1025CA	1/4 X 1 3/4 RECT BAR CA X 16'	\$134.54	2
AS1101CA	3/8 DIA. ROUND ROD CA X 16'	\$8.15	24
AS1109	1 3/4 DIAMETER ROD MF X 16'	\$74.97	3
AS1120CA	1/4 SQUARE BAR X 16' CA	\$11.85	17
AS1120DBA	1/4 SQUARE BAR X 16' DBA	\$21.36	4
AS1121CA	3/8 SQUARE BAR CA X 16'	\$11.57	3
6063 ALUMINUM ANGLES			
AS1219DBA	2 1/2 X 2 1/2 X 1/8 ANG DBA X	\$703.36	11
AS1223CA	4 X 4 X 1/8 ANG CA X 16'	\$59.76	9
AS1223DBA	4 X 4 X 1/8 ANG DBA X 16'	\$88.43	10
AS1301	1/2 X 3/4 X 1/8 ANG MF X 16'	\$7.97	305
AS1304CA	1/2 X 1 1/2 X 1/8 ANG CA X 16'	\$15.80	2
AS1306BLK	3/4 X 1 X 1/16 ANG BLK ANO X 1	\$21.36	2
AS1307DBA	3/4 X 1 X 1/8 ANG DBA X 16'	\$25.55	11
AS1318DBA	1 1/2 X 2 X 1/8 ANG DBA X 16'	\$44.00	4
AS1330	4 X 6 X 3/8 ANG MF X 16'	\$155.87	2
SP1232DBA	2 X 2 X 1/16 ANG DBA X 20'	\$39.98	8
6063 ALUMINUM CHANNEL			
AS1400CA	3/8 X 3/8 X 1/16 CHANN CA X 8'	\$18.95	1
AS1401	1/2 X 3/8 X 1/8 CHANN MF X 16'	\$192.80	4
AS1409EDBA	1 X 1 1/2 X 1/8 CHANN DBA X 16	\$37.69	18
AS1417	1 3/4 X 1/2 X 1/8 CHANN MF X 16'	\$17.33	2
AS1418	1 3/4 X 3/4 X 1/8 CHANN MF X 1	\$23.42	34
AS1422	2 1/4 X 7/8 X 1/8 CHANN MF X 1	\$25.59	29
AS1423A	2 1/2 X 3/4 X 1/8 CHANN MF X 16	\$16.28	12
AS1425B	4 X 1 X 1/8 CHANN MF X 16'	\$29.96	81
SP1406	3/4 X 3/4 X 1/8 X 20' 6063 T5	\$18.67	9
SP1407	3/4 X 1/2 X 1/8 X 16' CHANNEL	\$21.91	2
SP1409F	1 X 1/2 X 1/8 CHANN MF X 138.5	\$7.25	171
SP1412B	1.25 X 1.25 X .125WA X 281.00"	\$25.52	10
SP1417MIFAL6	1.75 X 1.75 X 1/8 X 16' 6063	\$42.25	2
SP1442	2.75" X 1.75 X .110 X 16' CHAN	\$27.97	45

PART#	DESCRIPTION	\$ per PC	QTY
6063 ALUMINUM TUBE			
AS1605	1 1/4 O.D X 1/16 TUBE MF X 20'	\$13.90	224
AS1606	1 1/2 O.D X 1/16 TUBE MF X 12'	\$8.99	283
AS1606C	1 1/2 O.D X 1/16 TUBE MF X 24'	\$26.41	7
AS1606CA	2 1/2 O.D X 1/16 TUBE CA X 8'	\$13.97	178
AS1611A	3/4 SQ X 1/16 TUBE MF X 24'	\$13.76	26
AS1621DBA	4 SQ X 1/8 TUBE DBA X 20'	\$468.82	5
AS1636-X	1 3/4 X 3 X 3/16 TUBE MF X 21'	\$109.72	39
AS1644DBA	1 3/4 X 4 1/2 X 1/8 TUBE DBA X	\$140.88	17
SP1702B	1" SQ. X .063 X 24' 6063	\$24.88	47
SP1702BD	1" SQ. X 1/8 RAD X 24'	\$32.96	19
SP1703	1 1/4" SQ. RC X .125 X 24' 6	\$57.89	4
SP1704A	1 1/2" SQ. X .125 X 21'	\$42.91	9
SP1704B-DBA	1 1/2" SQ. X .125 X 24' DBA TU	\$113.99	16
SP1704D	1.75 SQ X .125WA X 21' 6063 T5	\$56.00	4
SP1704E	1.75" SQ. X .125WA X 20' CL.	\$56.00	2
SP1706BB	2" SQ. .125 RAD X 24'	\$76.17	4
SP1708-17	3 SQ X 1/8 TUBE MF X 17'	\$74.19	9
SP1708AA	3" SQ. X .125 X 24'	\$107.95	1
SP1710C	4" SQ. X .250 X 21	\$228.00	3
SP1725	1 X 3 X 1/8 X 24' RAD.TUBE M.F	\$48.14	3
SP1725A	1 X 3 X 1/8 X 24' RAD.TUBE C.A.	\$54.56	27
SP1726	1 X 4 X 1/8 X 24' 6063	\$93.33	15
SP1733	1.75 X 2.25 X 1/8 X 24' 6063	\$104.80	2
SP1737A	2 X 4 X 3/16 X 25' RECT TUBE	\$135.49	1
SP1739A	3 X 5 X 1/8 X 21' 6063	\$151.65	1
SP1739B	3 X 5 X 1/8 X 24' 6063	\$242.00	1
SP1745	4 X 6 X 1/8 X 21' 6063	\$332.85	1
SP1755	1.375" O.D. X .058 X 20'	\$16.45	80
SP1758	1.875" O.D. X .065 X 16'	\$14.21	21
SP1759	2" O.D. X .058 X 16'	\$12.80	54
SP1770A	1/2" SCHD 40 PIPE X 20'	\$16.47	14
SP1771	3/4" SCHD 40 PIPE X 20'	\$23.67	4
SP1780	1 1/2" SCHD 80 PIPE X 20'	\$75.41	5
SP184/MIFAL5"	X .4/2 AM STND CHANN X 25'	\$258.69	1



STEEL



STEEL SHAPES			
SP2001	3/16 DIA X 12' COLD ROLL	\$13.33	1
SP2013	7/8 DIA X 12' COLD ROLL	\$38.22	6
SP2029G	1/8 X 1 X 12' COLD ROLL	\$10.59	3
SP2031F	1/4 X 1 X 12' COLD ROLL	\$21.09	11
SP2031U	1/4 X 4 X 12' COLD ROLL	\$100.00	1
SP2033P	3/8 X 6 X 12' COLD ROLL	\$220.00	1
SP2101	1/4 DIA X 20' HOT ROLL	\$13.33	14
SP2124A	1/8 X 1/2 X 20' HOT ROLL	\$5.88	10
SP2124G	1/8 X 1 1/4 X 20' HOT ROLL	\$20.00	1
SP2125R	3/16 X 4 X 20' HOT ROLL	\$34.12	1
SP2126E	1/4 X 1 X 20' HOT ROLL	\$13.33	1
SP2128Y	3/8 X 12 X 20' HOT ROLL	\$233.33	1
SP2234	4 X 3 X 1/4 ANG X 20'	\$86.67	1
SP2402A	3/4 SQ X 18GA TUBE X 20'	\$12.35	13
SP2402D	3/4 SQ X 11GA TUBE X 20'	\$29.33	18
SP2430C-20	2 X 1 X 11GA TUBE X 20'	\$35.33	18
SP2502E	3/8 O.D X 11GA X 17/24'	\$214.40	1
SP2515D	1 3/16 O.D X 3/16 X 17/24	\$55.09	1
SP2526D	1 3/4 O.D X 13GA X 17/24'	\$81.60	1
SP2526F	1 3/4 O.D X 11GA X 17/24'	\$161.64	3
SP2530J	2 O.D X 7/32 X 17/24'	\$212.27	1
SP2536K	2 3/8 O.D X 1/4 X 17/	\$74.75	4
SP2538E	2 9/16 O.D. ROUND TUBE X 1/4 X 17/;	\$335.29	1
SP2539J	2 11/16 O.D X 1/4W X 17/24'	\$338.67	1
SP2540C-12	2 3/4 O.D X 11GA X 12'	\$17.33	1
SP2542A	3 O.D X 16GA X 17/24'	\$72.00	6
SP2542C-12	3 O.D X 11GA X 144"	\$86.67	1
SP2550B	4 O.D ROUND TUBEX 11GA X 17/24'	\$36.76	1
SP2550C	4 O.D X 5/32 X 17'	\$238.67	2
SP2580	1 1/4 SCHED 40 PIPE X 21'	\$40.00	1



STAINLESS



STAINLESS STEEL SHAPES			
AS1902A	7/8 O.D X .20GA (.035) X 20'	\$70.77	15
AS1915+	2 O.D X .065 X 20' 304	\$116.59	2
AS1939	1 SQ X .065 X 20' 304 POL	\$43.53	6
AS1948A	1 1/4 X SCHED 40 PIPE X 20' #4	\$396.36	2
AS1970	1/4 DIAMETER ROD X 12' 304	\$10.99	5
AS1971	5/16 DIAMETER ROD X 12' 304	\$12.99	2
AS1985	1/2 SQUARE BAR X 12' 304	\$49.54	6
AS1986	5/8 SQUARE BAR X 12' 304	\$71.06	3
AS1990	1/8 X 1/2 RECT BAR X 12' 304	\$13.21	16
AS1990E	1/8 X 1 1/2 RECT BAR X 12' 304	\$25.16	3
AS1992I	1/4 X 2 1/2 RECT BAR X 12' 304	\$83.89	1

Reduced Prices. Prime Materials.





STRUCTURAL 6061-T6



PART#	DESCRIPTION	\$ per PC	QTY
6061 ALUMINUM SOLIDS			
SP1001B	1/8 X 3/4 RECT BAR X 12' 6061	\$3.80	2
SP1001F	1/8 X 1 3/4 RECT BAR X 12' 6061	\$8.82	38
SP1002	3/16 X 1/2 RECT BAR X 12' 6061	\$14.35	10
SP1002A	3/16 X 3/4 RECT BAR X 12' 6061	\$5.62	2
SP1002E	3/16 X 1 3/4 RECT BAR X 12' 60	\$18.89	3
SP1002F	3/16 X 2 RECT BAR X 12' 6061 T	\$13.40	2
SP1003A	1/4 X 5/8 RECT BAR X 12' 6061	\$8.87	6
SP1003AA	1/4 X 3/4 RECT BAR X 12' 6061	\$6.38	8
SP1003B	1/4 X 1 RECT BAR X 12' 6061 T6	\$8.47	73
SP1003C	1/4 X 1 1/4 RECT BAR X 12' 606	\$11.47	2
SP1003G	1/4 X 2 1/4 RECT BAR X 12' 606	\$25.25	4
SP1004	5/16 X 1/2 RECT BAR X 12' 6061	\$9.28	9
SP1004A	5/16 X 3/4 RECT BAR X 12' 6061	\$8.59	10
SP1004B	5/16 X 1 RECT BAR X 12' 6061 T	\$17.71	3
SP1004E	5/16 X 2 RECT BAR X 12' 6061	\$23.45	6
SP1004EE	5/16 X 2 1/2 RECT BAR X 12' 6061	\$32.19	2
SP1005	3/8 X 1/2 RECT BAR X 12' 6061	\$7.64	13
SP1005AA	3/8 X 5/8 RECT BAR X 12' 6061	\$18.67	1
SP1007B	5/8 X 1 1/4 RECT BAR X 12' 606	\$61.98	1
SP1007C	5/8 X 1 1/2 RECT BAR X 12' 606	\$37.61	8
SP1007G	5/8 X 3 RECT BAR X 12' 6061 T6	\$97.57	5
SP1009A	1 X 1 1/2 RECT BAR X 12' 6061	\$96.53	1
SP1013G	2 X 4 X 32" 6061 T6	\$97.35	1
SP1014AC	2 X 2 1/4" X 144" REC BAR	\$186.28	1
SP1020M	1/8 X 6 RECT BAR MF X 20'	\$58.67	8
SP1022F	1/4 X 1 3/4 FLAT BARX 8'	\$8.35	10
SP1022FF	1/4 X 1 3/4 FLAT BAR X 20'	\$34.37	38
SP1027B	3/4 X 2 FLAT BARX 20'	\$79.68	29
SP1050	.25 X 6" X 20' 5086 H111	\$300.00	8
SP1102	1/4" DIA. ROD X 12' 6061	\$4.14	4
SP1117	1 1/4 DIA. ROUND ROD X 10'	\$33.91	137
SP1129	2 1/2" DIA. ROUND ROD X 12' 6061	\$158.94	1
SP1142	5/16" SQ. BAR X 12' 6061	\$6.99	28
SP1143	3/8" SQ. BAR X 12' 606	\$4.78	3
SP1145	1/2" SQ. BAR X 12' 6061	\$8.40	7
SP1146	5/8" SQ. BAR X 12' 606	\$19.33	7
SP1147B	7/8" SQ. BAR X 40" 6061	\$24.33	1
SP1153	2" SQ. BAR X 12' 6061	\$129.51	1
SP1177	5/32" DIA. ROD X 12' 20	\$40.56	1
SP1199	1" DIA. HALF ROUND X 96"	\$31.54	15
AS1011	3/16 X 1/2 RECT BAR MF X 16'	\$2.96	39
6061 ALUMINUM ANGLES			
SP1201A	1.00 X 1.00 X .188 X 25'	\$24.87	29
SP1202	1.25 X 1.25 X .125 X 25'	\$32.20	5
SP1202B	1.25 X 1.25 X .250 X 25'	\$47.59	4
SP1203	1.50 X 1.50 X .125 X 25'	\$24.28	27
SP1204A	1.75 X 1.75 X .188 X 25'	\$53.18	4
SP1205	2.00 X 2.00 X .125 X 25'	\$38.21	34
SP1227	.750 X .750 X .125 X 16'	\$9.81	100
SP1235C	3.00 X 3.00 X .250 X 20'	\$132.11	3
SP1307	2.50 X 2.00 X .188 X	\$82.11	1
SP1308	3.00 X 2.00 X .188 X 25' 606	\$69.68	1
SP1317	6.00 X 4.00 X .375 X 20' 6	\$275.40	1
SP1323	5/16 X 5/8 X 3/64 X 10'	\$4.19	22

PART#	DESCRIPTION	\$ per PC	QTY
6061 ALUMINUM TUBES			
AS1655	3 X 6 X 3/16 TUBE MF X 21'	\$194.60	2
SP1601A	1/4" O.D X .049 X 12' 60	\$10.40	48
SP1604B	1/2" O.D X .049 X 12'	\$9.46	1
SP1605E	5/8" O.D X .120 X 12'	\$62.74	1
SP1607E	7/8" O.D X .120 X 12' 6061	\$80.20	3
SP1609C	1 1/8" O.D. X .065WA X 12' 60	\$57.60	1
SP1610B	1 1/4" O.D X .058 X 12'	\$62.97	2
SP1611B	1 3/8" O.D X .058 X 12'	\$53.44	27
SP1612B	1 1/2" O.D X .058 X 12'	\$100.00	1
SP1612C-12	1 1/2 O.D X 1/16 TUBE MF X 12'	\$50.31	64
SP1613D	1 5/8" O.D X .125 X 12'	\$122.74	1
SP1614A	1 3/4" O.D X .065 X 12'	\$15.05	3
SP1614I	1 3/4" O.D X .375 X 24'	\$184.38	1
SP1616	2" O.D X .049 X 12' 6061	\$68.69	2
SP1616BB	2" O.D X .065 X 24' 6061	\$47.24	4
SP1620	2 3/4" O.D X .125 X 24'	\$179.29	2
SP1629A	5" O.D X .125 X 24' 6061	\$351.01	2
SP1651	1/4" SCHED 40 PIPE X 12'	\$34.81	1
SP1653	1/2" SCHED 40 PIPE X 20'	\$17.33	11
SP1654	3/4" SCHED 40 PIPE X 20' 6061	\$23.73	4
SP1655A	1" SCHED 80 PIPE X 20'	\$47.65	2
SP1656	1 1/4" SCHED 40 PIPE X 20'	\$70.13	3
SP1657	1 1/2" SCHED 40 PIPE X 20'	\$126.67	5
SP1658	2" SCHED 40 PIPE X 20'	\$60.00	2
SP1659	2 1/2" SCHED 10 PIPE X 20'	\$72.82	20
SP1659B	2 1/2" SCHED 80 X 20'	\$123.29	12
SP1661	3 1/2" SCHED 40 PIPE X 20'	\$135.31	1
SP1661A	3 1/2" SCHED 80 PIPE X 21'	\$221.24	7
SP1672A	2" SQ. X .125 X 24' 6061	\$89.37	1
SP1674A	3" SQ. X .250 X 24' 6061	\$266.29	2
SP1674AA	3" SQ. X 1/4 X 20' 6061 T6	\$189.28	1
SP1674Z	3" SQ. X .125 X 24' 6061	\$141.71	1
SP1682A	2 X 3 X .188 X 24' 6061-T6	\$109.72	1
SP1683A	2 X 4 X .188 X 24' MF 6061 T	\$171.31	1
SP1689	4 X 8 X .250 X 24	\$434.91	1
SP1703B	1 1/4 SQ X 1/8 TUBE MF X 21'	\$36.00	2

ODD BALL EXTRUSIONS			
AS1577MIFAL	7 SIGN FRAME W/O RETAINER 24'6	\$73.72	3
AS2915	1/8 X 1 TERM BAR 2001W/3/8"LEG	\$2.11	18
AS5021+	GRAPHIC HANGER ALUMINUM X 21'	\$25.25	42
AS5040A	REVEAL CHANNEL X 12' 6063 T5	\$1.55	64
SP1506MIFAL	1.5 X 1.5 X 3/16 X 22'TEE 6061	\$42.02	1
SP1580	CANVAS RAIL X 24' 1"	\$16.88	20
SP1600E	3/16 OD X .020 WALL X 12' BRASS	\$11.15	4
SP1825+	10" X .25 AL ASSN I BEAM X 25'	\$490.72	1

Reduced Prices. Prime Materials.



Aluminum Supply Co.
14359 Meyers Rd.
Detroit, MI 48227

Reduced Prices. Prime Materials.

PART#	DESCRIPTION	\$ Per PC	QTY
MILL FINISH ALUMINUM			
AS0003-12	.025 X 48 X 144 3003 H14 MF	\$43.53	15
AS0022-08	.100 X 48 X 96 3003 H14 MF	\$163.92	1
AS0022-10	.100 X 48 X 120 3003 H14 MF	\$111.58	2
AS0035-12A	.063 X 36 X 144 STUCCO MF 310'	\$91.63	51
AS0036-10	.063 X 48 X 120 STUCCO MF	\$112.40	1
AS0037-10	.040 X 48 X 120 #10 FLUTED MF	\$94.12	9
AS0042B-08	.020 X 36 X 96 5052 H32 MF	\$63.38	2
AS0043A-12	.032 X 60 X 144 5052 H32 MF	\$72.01	2
AS0045B	.050 X 48 X 142 5052 H32 MF	\$91.03	3
AS0049-08	.063 X 60 X 96 5052 H32 MF	\$85.52	2
AS0056-08	.090 X 60 X 96 5052 H32 MF	\$116.67	1
AS0067-12	.190 X 60 X 144 5052 H32 MF	\$400.28	2
AS0070-12	.090 X 48 X 144 5086 H116 MF	\$746.52	2
AS0077-10	.050 X 48 X 120 6061 T6 MF	\$90.66	6
AS0077-12	.050 X 48 X 144 6061 T6 MF W/N	\$107.78	5
SP0045+	.160 X 48 X 120 5052 H32 M.F	\$212.71	1
SP0049	.250 X 48" X 168" 3003 H14 M.F	\$1,201.72	1

ANODIZED ALUMINUM			
AS0301	.032 X 48 X 120 LT BRONZE ANOI	\$85.39	1
AS0301A	.032 X 48 X 144 LT. BRONZE ANO	\$110.66	1
AS0302	.032 X 48 X 120 MD BRONZE ANC	\$83.73	1
AS0303-9	.032 X 48 X 108 DK BRONZE ANO	\$78.14	32
AS0303G	.032 X 48 X 120 BRT BRUSHED CL	\$109.33	18
AS0316LTBA	.063 X 48 X 120 LT BRONZE ANOI	\$141.47	5
AS0323	.080 X 48 X 120 DK BRONZE ANO	\$239.32	1
AS0324	.080 X 48 X 120 BLACK ANODIZEI	\$239.32	2
AS0335	.080 X 48 X 144 DK BRONZE ANO	\$287.18	6
SP0013	.032 X 48 X 96 5052 H32 BRUSHE	\$53.64	14
SP0033A	.080 X 48 X 120 5052 2/S ANOD.	\$220.94	7
SP0310A	.050 X 48 X 120 CLEAR ANO	\$88.00	45

PAINTED ALUMINUM			
AS0100B	.032 X 48 X 120 FOREST GREEN	\$70.72	2
AS0105+	.032 X 48 X 120 CARDINAL RED	\$68.00	1
AS0105AA	.032 X 48 X 144 DARK BRONZE	\$80.05	7
AS0105AKY	.032 X 48 X 120 ALMOND	\$63.34	10
AS0105T	.032 X 48 X 120 TEAL	\$62.93	1
AS0105UV	.032 X 48 X 120 AWARD BLUE	\$58.56	1
AS0105V	.032 X 48 X 120 GRANITE	\$65.07	1
AS0105Z-12	.032 X 48 X 144 WEATHERED ZIN	\$82.49	2
AS0107B	.032 X 48 X 120 PATINA GREEN	\$66.49	4
AS0107KYN	.032 X 48 X 120 COPPER PENNY	\$68.75	2
AS0111A	.040 X 48 X 120 CHAMP. METALL	\$88.07	2
AS0112E	.040 X 48 X 144 ALMOND	\$97.27	2
AS0114B	.050 X 48 X 144 SIERRA TAN	\$113.03	8
AS0117G	.050 X 48 X 120 CARDINAL RED	\$94.66	3
AS0117KYN	.050 X 48 X 144 SLATE GRAY	\$118.60	2
AS0117PKY	.050 X 48 X 144 CHAMPAGNE MI	\$114.33	5
AS0117Z-12	.050 X 48 X 144 ZINC MET. KYN	\$124.93	7
AS0119	.063 X 48 X 120 MED BRONZE	\$129.70	4
AS0150-12	.032 X 48 X 144 WH/WH	\$67.76	2
AS0157D	.040 X 48 X 144 SHELL GRAY	\$89.13	1
AS0166	.063 X 60 X 96 WH/WH	\$92.27	3
AS0193KYN	.040 X 48 X 120 BRANDYWINE	\$91.73	4

PART#	DESCRIPTION	\$ Per PC	QTY
PAINTED STEEL			
AS0401	24GA X 48 X 120 MED BRONZE	\$53.72	5
AS0402	24GA X 48 X 120 MANSARD BROWN	\$56.78	5
AS0402A	24GA X 48 X 144 MANSARD BROWN	\$66.40	1
AS0407A	24GA X 48 X 120 HARTFORD GREEN	\$45.33	2
AS0409DK	24GA X 48 X 120 CHARCOAL	\$55.49	1
AS0411	24GA X 48 X 120 MILITARY BLUE	\$50.47	1
AS0413	24GA X 48 X 120 TERRA COTTA	\$66.48	11
AS0413B	24GA X 48 X 144 COPPER PENNY	\$72.46	18
AS0438	24GA X 48 X 120 SILVER METALLI	\$53.18	1
AS0438B	24GA X 48 X 120 ZINC METALLIC	\$59.29	6
AS0441KY	24GA X 48 X 120 CHAMPAGNE MET,	\$59.80	1
AS0443	24GA X 48 X 120 AGED COPPER	\$51.20	3

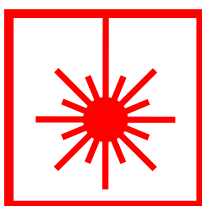
STEEL			
AS2010	16GA X 48 X 96 COLD ROLL SHEET	\$120.00	1
AS2015	13GA X 48 X 96 COLD ROLL SHEET	\$200.00	2
SP1926	.250 X 48 X 120 STEELTREAD	\$129.41	1
SP1930QQ	18GA X 36 X 120 PERFORATED	\$85.76	2

GALVANIZED STEEL			
AS2123A	20GA X 60 X 96 GALV SHEET	\$43.80	4
AS2156	11GA X 48 X 120 GALV SHEET	\$113.58	1
AS2170	22GA X 48 X 144 GALVANEAL	\$50.39	2
AS2171	20GA X 48 X 120 GALVANEAL	\$45.33	6
AS2182	12GA X 48 X 120 GALVANEAL	\$129.98	5
AS2185	24GA X 48 X 120 PAINT GRIP GALV	\$37.29	2
AS2190	22GA X 48 X 120 GALVALUME	\$44.67	2
AS2195	18GA X 48 X 120 PAINT GRIP BON	\$176.28	1

STAINLESS STEEL			
AS1801+	28GA X 36 X 120 304 2D	\$71.14	1
AS1804+	26GA X 36 X 120 304 2D	\$72.35	1
AS1804+	26GA X 48 X 96 304 2B	\$72.96	24
AS1832+	14GA X 48 X 120 304 2B	\$300.00	1
AS1866POI	18GA X 60 X 120 304 #4 PVC	\$380.93	4
AS1875+	14GA X 48 X 144 304 #4 PVC	\$427.93	1
AS1889POI	16GA X 48 X 120 304 #8 PVC	\$319.49	2
AS1890POI	16GA X 48 X 144 304 #8 PVC	\$336.00	1
AS1892POI	11GA X 48 X 120 304 #8 PVC	\$822.20	6
AS1899G	18GA X 48 X 120 430 #4 PVC	\$193.95	3

ODD BALLS			
AS2250	.100 X 48 X 96 6061 T6 TRDPLT	\$300.00	2
AS2504	.040 X 48 X 96 ROYAL PATTERN	\$102.53	2
AS2509A	.063 X 48 X 96 1/2 SQ 11/16 ST	\$112.56	3
AS2516	.063 X 48 X 120 1/16 D 7/64 ST	\$317.90	4
AS2577	.081 X 48 X 96 3/4 EXP FLAT	\$163.53	2
AS2600	12 OZ X 36 X 120 COPPER SHEET	\$119.06	3
AS2608	38 OZ X 36 X 96 COPPER SHEET	\$451.80	4

LASER CUT



FABRICATION



****ALL ITEMS LISTED PER PIECE****
****QUANTITIES MAY VARY DUE TO LOW PRICE****
****CALL TODAY: 313 - 491 - 5040****
 Visit us @ www.aluminumsupply.com

800-899-ASCO